



Wisconsin State Crime Laboratory (WSCL) Bureau Laboratory Assignments by Lab Section (2012-2017)

Wisconsin Department of Justice
Division of Law Enforcement Services
Crime Laboratory Bureau
17 W Main St.
P.O. Box 7857
Madison, WI 53707-7857

Lab Totals

Lab Section	Lab Unit	Date Assigned					
		2012	2013	2014	2015	2016	2017
Chemistry	Controlled Substances	5,443	5,603	5,835	5,894	6,478	6,452
	Toxicology	3,878	4,056	4,144	4,457	3,845	3,909
	Trace Evidence	222	191	155	176	158	157
	Section Total	9,543	9,850	10,134	10,527	10,481	10,518
Criminalistics	Crime Scene Response	49	87	53	86	119	95
	Firearms	1,320	1,260	443	711	598	708
	Footwear/Tire Track	85	74	48	105	68	39
	Forensic Imaging	70	48	46	67	35	33
	Identification	2,842	2,257	2,210	2,162	2,193	1,903
	Photography Work Order	1,162	1,080	789	1,016	613	687
	Toolmarks	44	33	52	34	16	18
	Section Total	5,572	4,839	3,641	4,181	3,642	3,483
DNA	DNA Analysis	4,224	3,495	3,379	4,164	4,674	5,307
	DNA Databank	12,166	10,883	10,732	17,559	35,154	33,325
	DNA Screening	285	164	216	239	609	1,060
	Section Total	16,675	14,542	14,327	21,962	40,437	39,692
Lab Total		31,790	29,231	28,102	36,670	54,560	53,693

Percent Change from Previous Year

Lab Section	Lab Unit	Date Assigned					
		2012	2013	2014	2015	2016	2017
Chemistry	Controlled Substances		3%	4%	1%	10%	0%
	Toxicology		5%	2%	8%	-14%	2%
	Trace Evidence		-14%	-19%	14%	-10%	-1%
	Section Total		3%	3%	4%	0%	0%
Criminalistics	Crime Scene Response		78%	-39%	62%	38%	-20%
	Firearms		-5%	-65%	60%	-16%	18%
	Footwear/Tire Track		-13%	-35%	119%	-35%	-43%
	Forensic Imaging		-31%	-4%	46%	-48%	-6%
	Identification		-21%	-2%	-2%	1%	-13%
	Photography Work Order		-7%	-27%	29%	-40%	12%
	Toolmarks		-25%	58%	-35%	-53%	13%
	Section Total		-13%	-25%	15%	-13%	-4%
DNA	DNA Analysis		-17%	-3%	23%	12%	14%
	DNA Databank		-11%	-1%	64%	100%	-5%
	DNA Screening		-42%	32%	11%	155%	74%
	Section Total		-13%	-1%	53%	84%	-2%
Lab Total			-8%	-4%	30%	49%	-2%

Data Notes: This is a count of laboratory casework assignments by lab section and by the year the assignment was initiated regardless of case year. Lab cases can have more than one assignment and this is reflected in this count. This report only includes the chemistry, criminalistics and DNA sections. Assignments reported under the DNA Databank Unit are reflecting individual samples to be uploaded to the DNA database as well as new DNA database matches. Not all charts are on the same scale.

Source: Laboratory Information System for the Wisconsin State Crime Lab (WSCL): BEAST

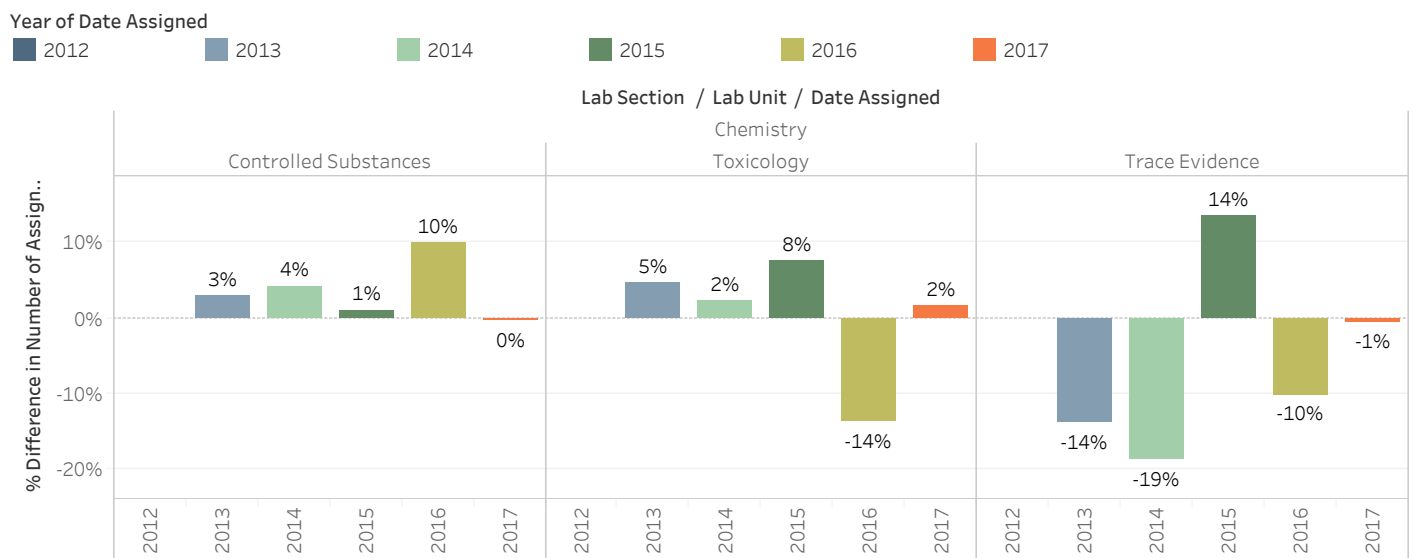
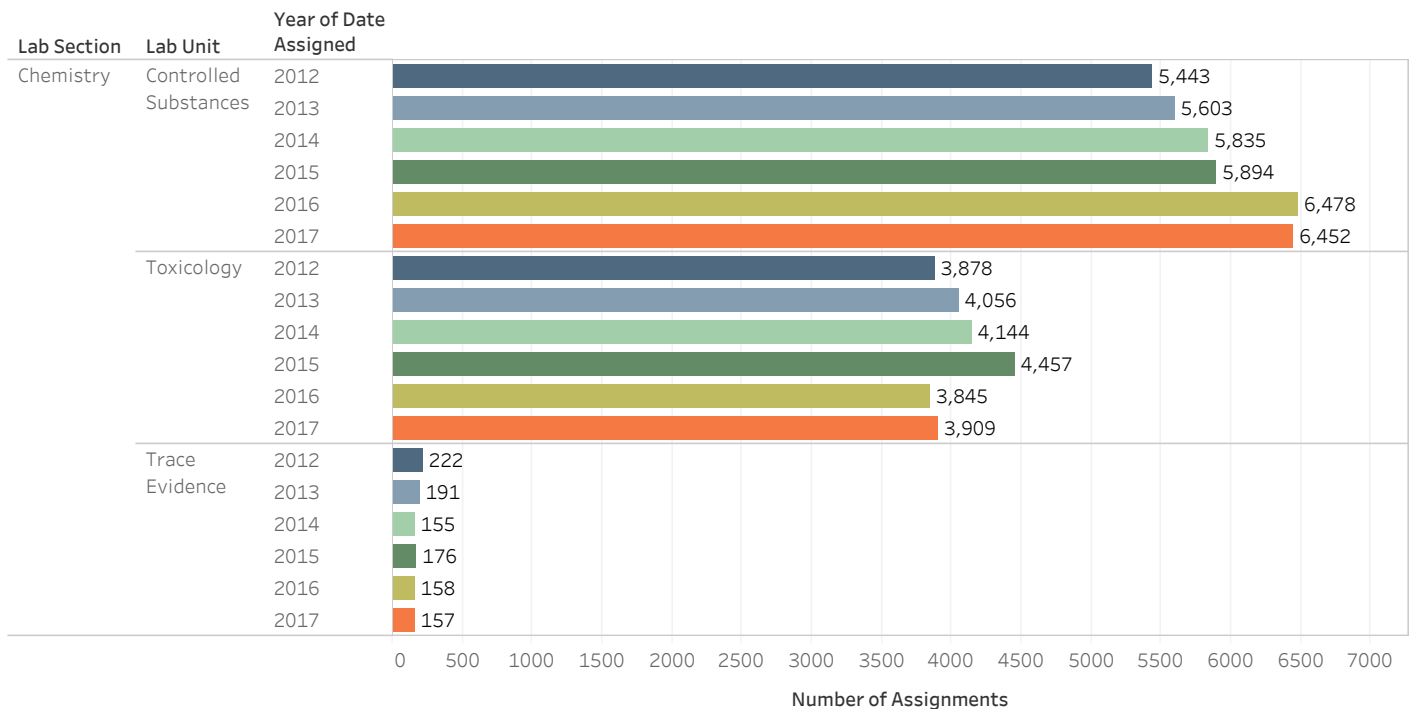
Last Updated: 2/9/18



Wisconsin State Crime Laboratory (WSCL) Bureau Laboratory Assignments by Lab Section (2012-2017)

Wisconsin Department of Justice
Division of Law Enforcement Services
Crime Laboratory Bureau
17 W Main St.
P.O. Box 7857
Madison, WI 53707-7857

Chemistry Section



Data Notes: This is a count of laboratory casework assignments by lab section and by the year the assignment was initiated regardless of case year. Lab cases can have more than one assignment and this is reflected in this count. This report only includes the chemistry, criminalistics and DNA sections. Assignments reported under the DNA Databank Unit are reflecting individual samples to be uploaded to the DNA database as well as new DNA database matches. Not all charts are on the same scale.

Source: Laboratory Information System for the Wisconsin State Crime Lab (WSCL): BEAST

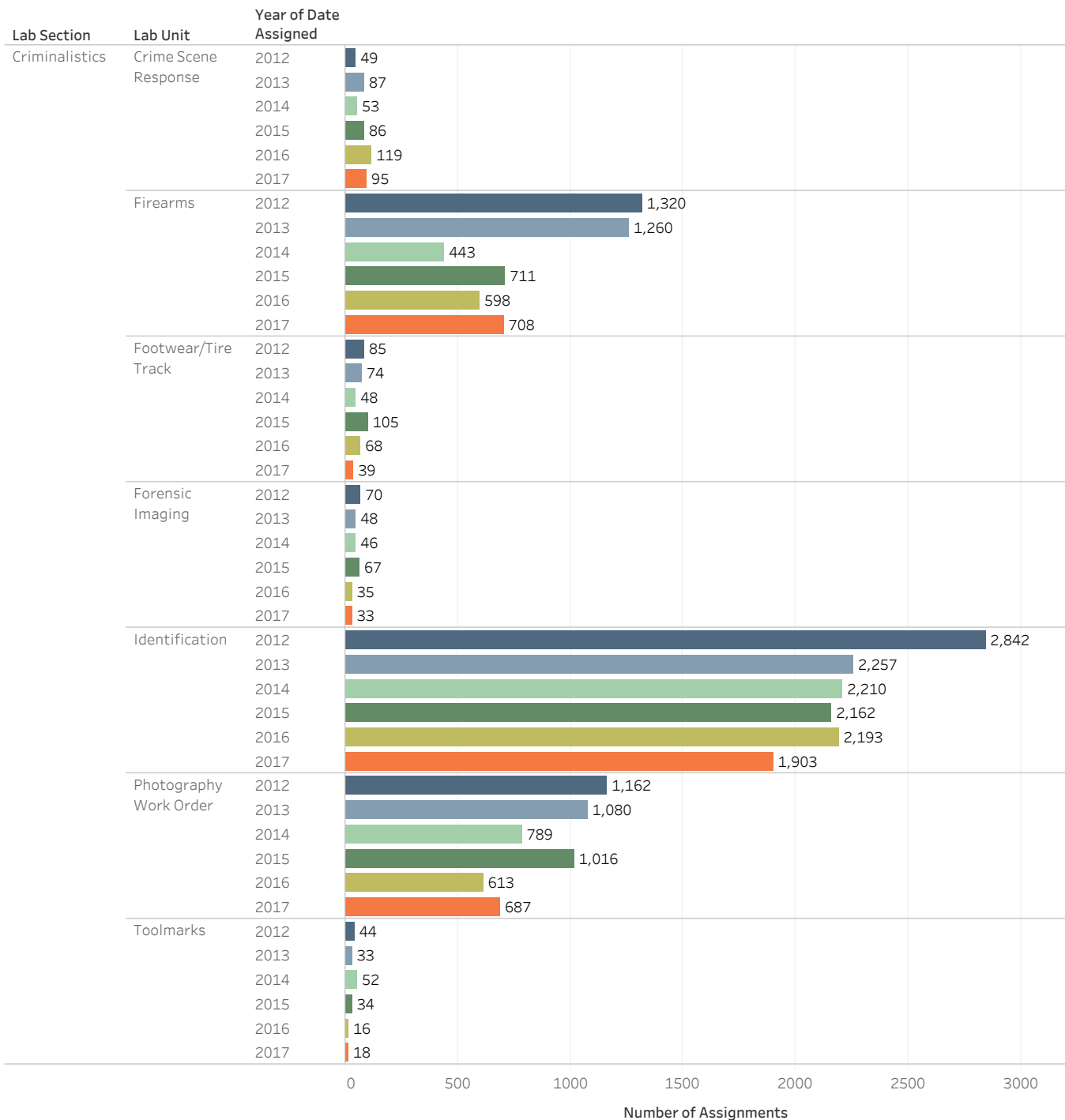
Last Updated: 2/9/18



Wisconsin State Crime Laboratory (WSCL) Bureau Laboratory Assignments by Lab Section (2012-2017)

Wisconsin Department of Justice
Division of Law Enforcement Services
Crime Laboratory Bureau
17 W Main St.
P.O. Box 7857
Madison, WI 53707-7857

Criminalistics Section



Year of Date Assigned

2012 2013 2014 2015 2016 2017

Data Notes: This is a count of laboratory casework assignments by lab section and by the year the assignment was initiated regardless of case year. Lab cases can have more than one assignment and this is reflected in this count. This report only includes the chemistry, criminalistics and DNA sections. Assignments reported under the DNA Databank Unit are reflecting individual samples to be uploaded to the DNA database as well as new DNA database matches. Not all charts are on the same scale.

Source: Laboratory Information System for the Wisconsin State Crime Lab (WSCL): BEAST

Last Updated: 2/9/18



Wisconsin State Crime Laboratory (WSCL) Bureau Laboratory Assignments by Lab Section (2012-2017)

Wisconsin Department of Justice
Division of Law Enforcement Services
Crime Laboratory Bureau
17 W Main St.
P.O. Box 7857
Madison, WI 53707-7857

Criminalistics Section



Data Notes: This is a count of laboratory casework assignments by lab section and by the year the assignment was initiated regardless of case year. Lab cases can have more than one assignment and this is reflected in this count. This report only includes the chemistry, criminalistics and DNA sections. Assignments reported under the DNA Databank Unit are reflecting individual samples to be uploaded to the DNA database as well as new DNA database matches. Not all charts are on the same scale.

Source: Laboratory Information System for the Wisconsin State Crime Lab (WSCL): BEAST

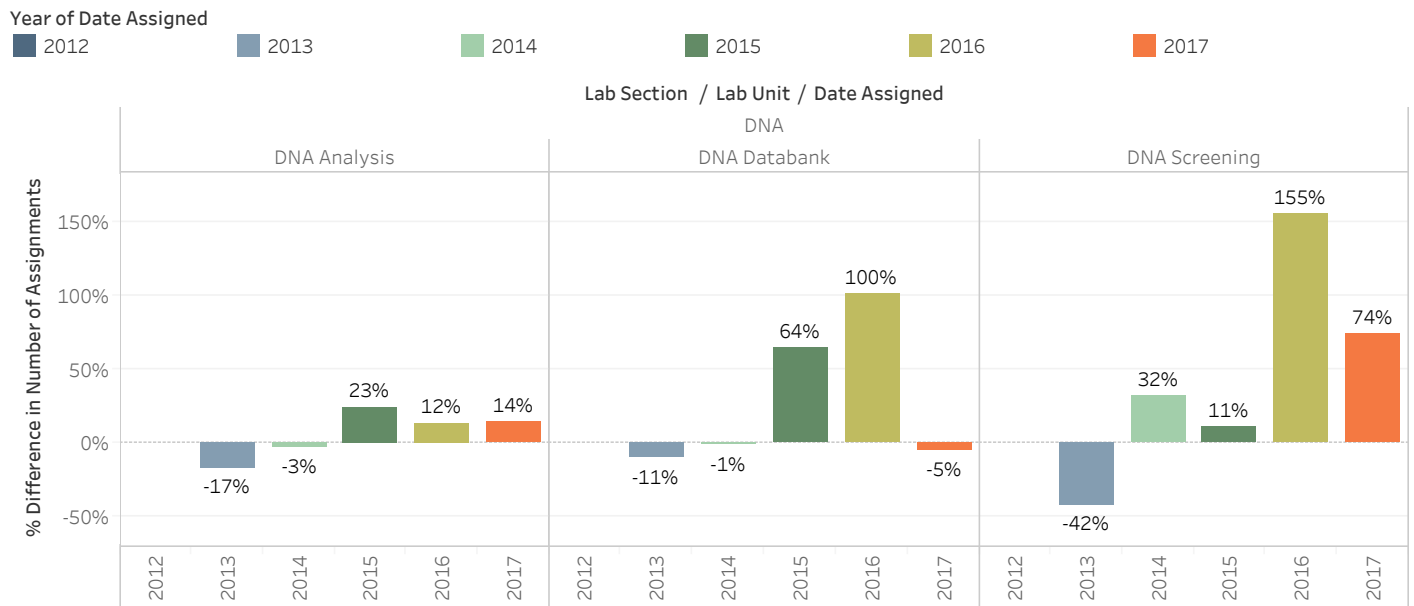
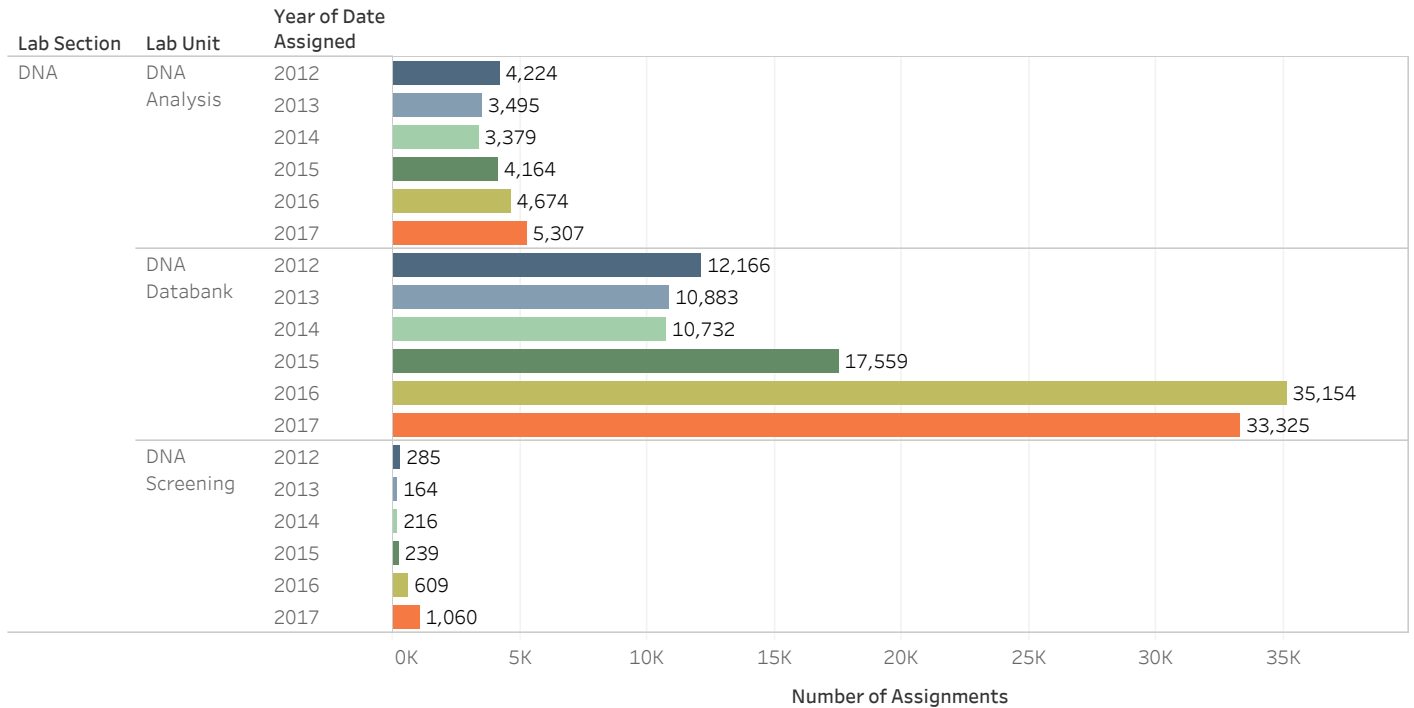
Last Updated: 2/9/18



Wisconsin State Crime Laboratory (WSCL) Bureau Laboratory Assignments by Lab Section (2012-2017)

Wisconsin Department of Justice
Division of Law Enforcement Services
Crime Laboratory Bureau
17 W Main St.
P.O. Box 7857
Madison, WI 53707-7857

DNA Section



Data Notes: This is a count of laboratory casework assignments by lab section and by the year the assignment was initiated regardless of case year. Lab cases can have more than one assignment and this is reflected in this count. This report only includes the chemistry, criminalistics and DNA sections. Assignments reported under the DNA Databank Unit are reflecting individual samples to be uploaded to the DNA database as well as new DNA database matches. Not all charts are on the same scale.

Source: Laboratory Information System for the Wisconsin State Crime Lab (WSCL): BEAST..