

# FOOTWEAR EVIDENCE COLLECTION

## Collecting 2D Impressions

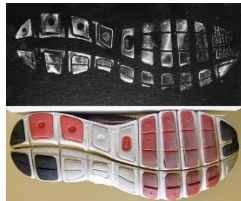
**ALWAYS properly photograph impressions prior to collection.**

- After photography, electrostatic lifting and/or gel lifting should be attempted on dust impressions.
- Submit lifts and items to the lab for additional analysis and/or processing.



### Submitting to the Lab

- Submit highest quality images on a CD, DVD or other electronic media, separated by case.
- Electrostatic Dust Lifts (and similar) should be photographed before packaging and be submitted inside a box, taped down with the impression side up. **DO NOT roll an electrostatic dust lift!**
- Allow casts to dry for 24 hours prior to packaging.
- Casts should be securely packaged in cardboard to prevent movement and breakage. **Do NOT package in plastic!**
- Items with possible footwear impressions, which can be removed from a crime scene, can be submitted to the lab for processing.
- Package footwear standards separately in paper bags.
- Submit footwear impressions with no comparison standards for a footwear investigative lead search.



# FOOTWEAR EVIDENCE COLLECTION

## Collecting 3D Impressions

**ALWAYS properly photograph impressions prior to collection.**

- After photography, prepare 2 lbs. of dental stone and mix with approximately 8-9oz of water (starting with less and adding more, as needed).
- ***For snow impressions, cool the casting material prior to pouring onto the impression or use Snow Stone or Sulfur Cement, following the Manufacturers' instructions.***



- Continue to mix until a consistency similar to pancake batter or all color beads are dissolved (some pre-packaged materials only). You can also lay the bag down and press to flatten to ensure no lumps remain.
- When fully mixed, begin by pouring the casting material at the highest point and **OUTSIDE** the impression. If lumps appear, add more water, and re-mix.



- Continue to add the remaining casting material by pouring onto **EXISTING** casting material to fill the impression. Casts should be approximately 1 inch thick.
- Allow to set for 30-45 minutes, or longer in colder temperatures. Gently dig around the cast and remove by lifting up on one edge of the cast.

***Do Not Clean Casts  
Prior To Submission!***

