

Metals

It is possible to compare metals on the basis of their elemental composition and surface morphology. Even minute particles can be examined. Questioned metal fragments which have been broken from their original source may often be fracture matched to that source.

Caution: Observe laws relating to the collection of evidence.

Procedure

Recover all metal fragments found at the scene. These should be sealed in vials, bottles, cardboard slide boxes or other ridged containers. Package and label.

Recover and submit all metal objects involved or encountered in an investigation. Although metal fragments may not be found at the scene, they may be detected later when the clothing is examined, since they may adhere to the surface or lodge in pockets and cuffs or to shoes. Therefore, it is important to have for comparison the object from which the fragments may have originated.

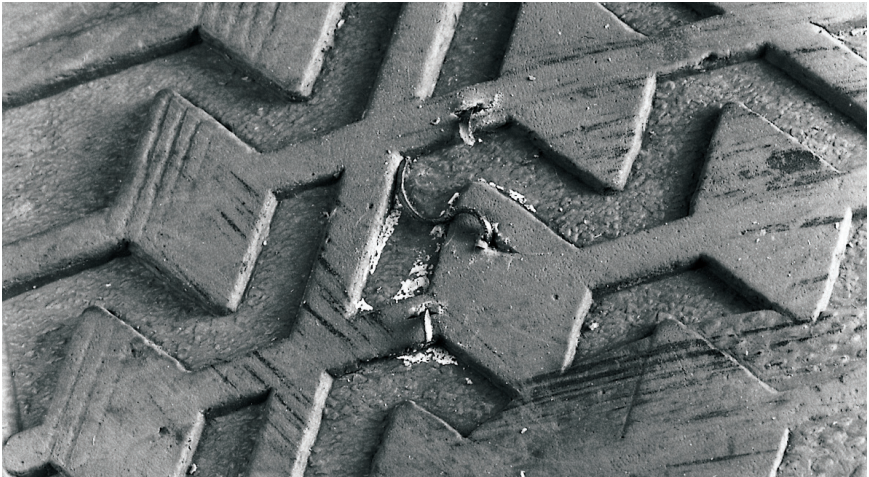


Fig. 19-1

Trace metal and glass fragments can often be recovered from the soles of shoes if the suspect walks through such evidence during commission of the offense.

